

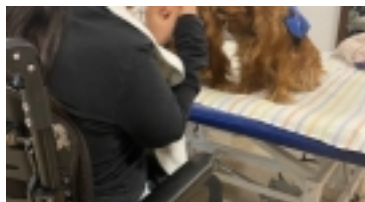
SIMBA I TUNA. Cans de CATC.

Published by [IVANA LOPEZ GAY](#) [1] on 09/12/2021 - 14:15 | Last modification: 09/12/2021 - 14:16

Hem tingut la visita dels cans de CTAC.

El terapeuta Josep ens ha proposat un joc amb mitjons on hem treballat la motricitat, la memòria i la socialització.

La Tuna i en Simba són un estímul permanent que ens ajuden a relacionar-nos gràcies a les emocions i l'atenció que ens desperten.



[2]



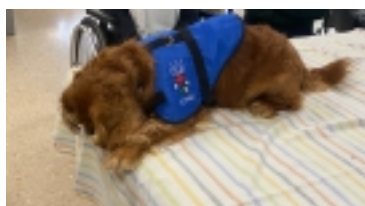
[3]



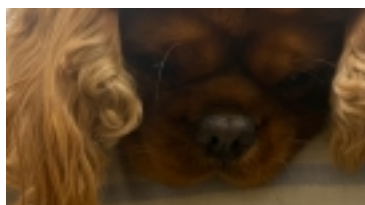
[4]



[5]



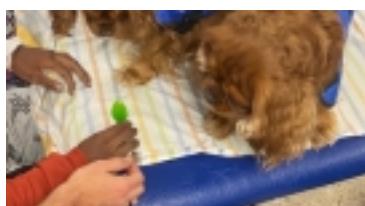
[6]



[7]



[8]



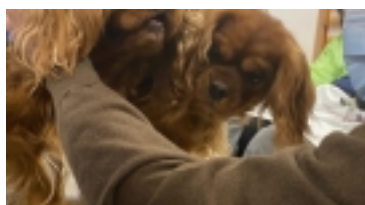
[9]



[10]



[11]



[12]



[13]



[14]



[15]

- [16]

Source URL: <https://respir20.diba.cat/en/gallery/simba-tuna-cans-de-catc>

Links:

- [1] <https://respir20.diba.cat/en/members/lopezgi>
- [2] https://respir20.diba.cat/sites/respir20.diba.cat/files/img_8359.jpg
- [3] https://respir20.diba.cat/sites/respir20.diba.cat/files/img_8360.jpg
- [4] https://respir20.diba.cat/sites/respir20.diba.cat/files/img_8385.jpg
- [5] https://respir20.diba.cat/sites/respir20.diba.cat/files/img_8386.jpg
- [6] https://respir20.diba.cat/sites/respir20.diba.cat/files/img_8387.jpg
- [7] https://respir20.diba.cat/sites/respir20.diba.cat/files/img_8390.jpg
- [8] https://respir20.diba.cat/sites/respir20.diba.cat/files/img_8398.jpg
- [9] https://respir20.diba.cat/sites/respir20.diba.cat/files/img_8404.jpg
- [10] https://respir20.diba.cat/sites/respir20.diba.cat/files/img_8406.jpg
- [11] https://respir20.diba.cat/sites/respir20.diba.cat/files/img_8414.jpg
- [12] https://respir20.diba.cat/sites/respir20.diba.cat/files/img_8419.jpg
- [13] https://respir20.diba.cat/sites/respir20.diba.cat/files/img_8429.jpg
- [14] https://respir20.diba.cat/sites/respir20.diba.cat/files/img_8435.jpg
- [15] https://respir20.diba.cat/sites/respir20.diba.cat/files/img_8441.jpg
- [16] <https://respir20.diba.cat/node/4709>